

D

D

C

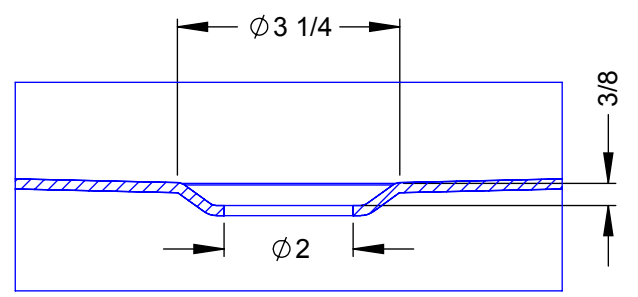
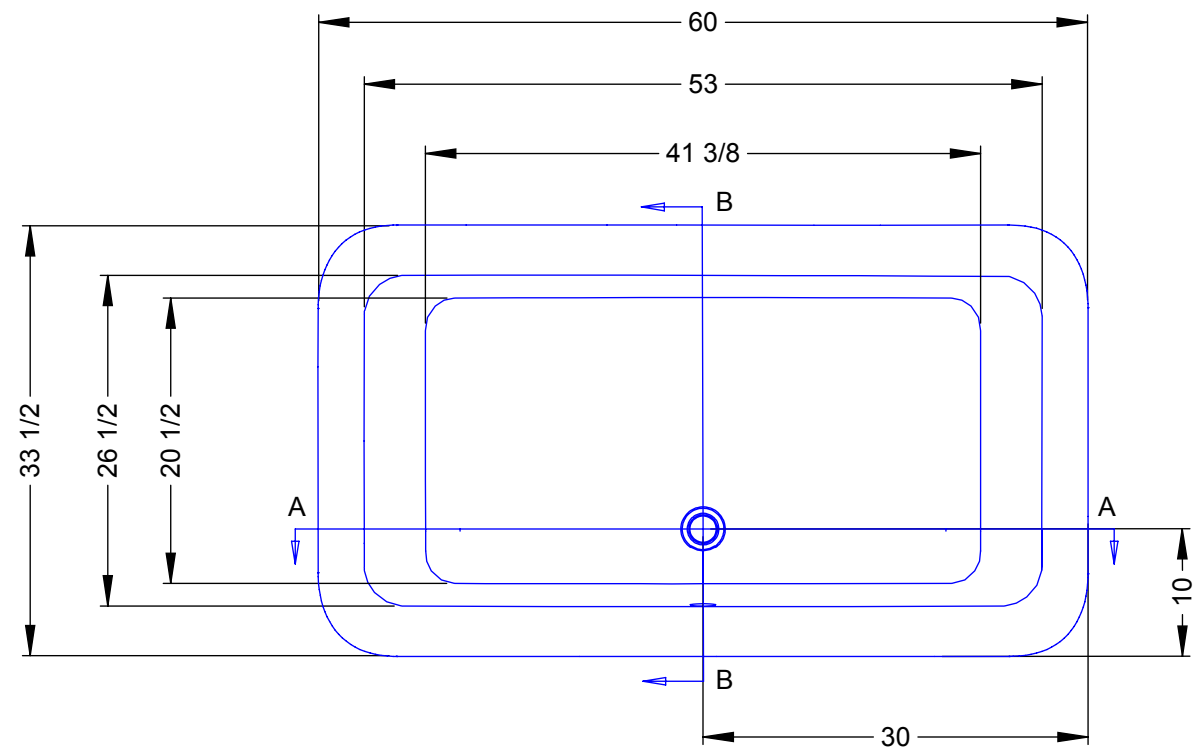
C

B

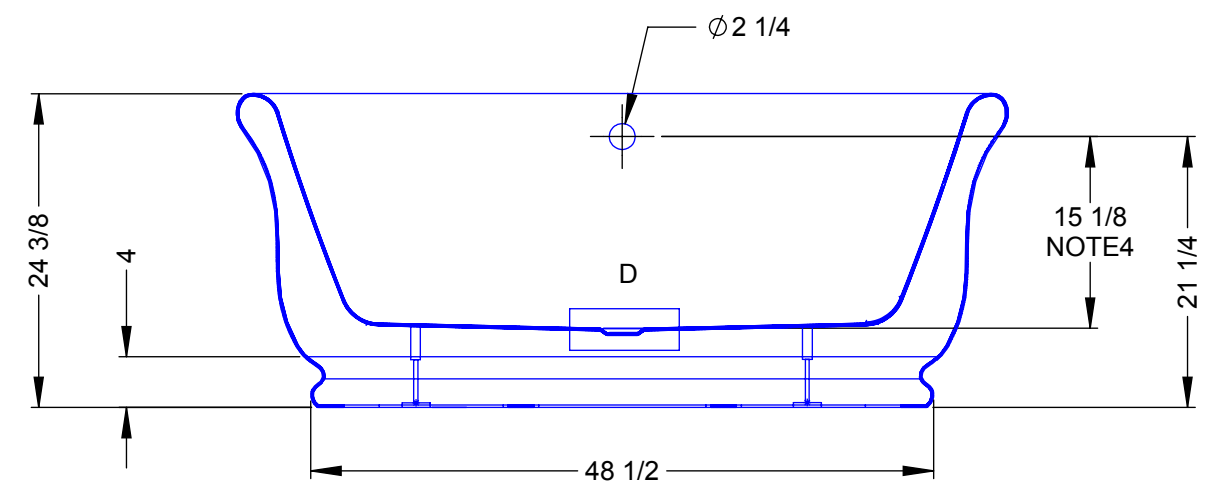
B

A

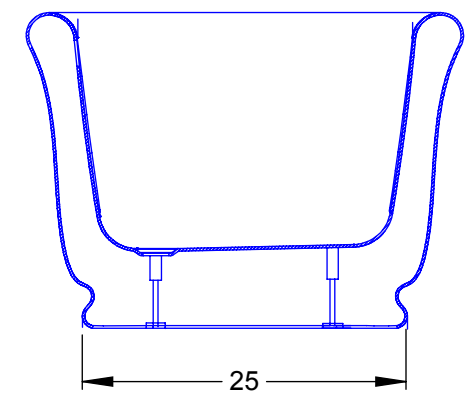
A



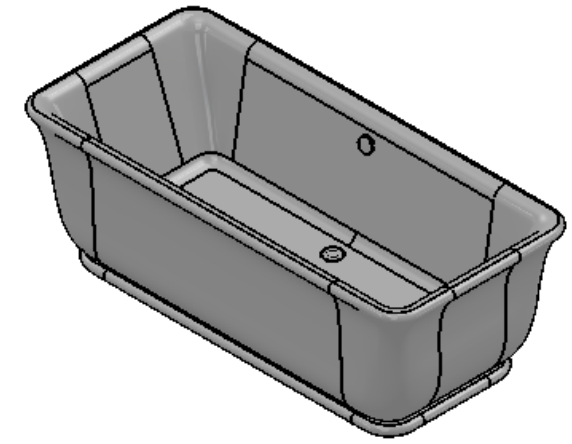
DETAIL D



SECTION A-A



SECTION B-B



- NOTES:
1. ALL DIMENSIONS ARE APPROXIMATE (TOLERANCE: 0.25"/6.4mm). DIMENSIONS SUBJECT TO CHANGE WITHOUT PRIOR NOTICE.
 2. MOULDED ACRYLIC WITH FIBERGLASS REINFORCEMENT
 3. CHROME WASTE/OVERFLOW INCLUDED
 4. DIMENSION FROM CENTER OF DRAIN TO LOWEST POINT IN BATHING WELL



PROPRIETARY AND CONFIDENTIAL
 THE INFORMATION CONTAINED IN THIS DRAWING IS THE SOLE PROPERTY OF TOMLIN INDUSTRIES (2000) INC. ANY REPRODUCTION IN PART OR AS A WHOLE WITHOUT THE WRITTEN PERMISSION OF TOMLIN INDUSTRIES (2000) INC. IS PROHIBITED.

UNLESS OTHERWISE SPECIFIED:		NAME	DATE
DIMENSIONS: INCHES		DRAWN	C.M 08/15/11
TOLERANCES: SEE NOTE 1		CHECKED	T.K 08/15/11
FRACTIONAL: ± N/A		ENG APPR.	
ANGULAR ± 1 DEG.		MFG APPR.	
TWO PLACE DECIMAL: ±0.25		Q.A.	
THREE PLACE DECIMAL: N/A		COMMENTS:	
MATERIAL: SEE NOTE 2			
FINISH:			
DO NOT SCALE DRAWING			

RELEASED		
TITLE:		
60FS33 - MERIT FREESTANDING TUB		
SIZE	DWG. NO.	REV
B	-	
SCALE: 1:15	WEIGHT:	SHEET 1 OF 1