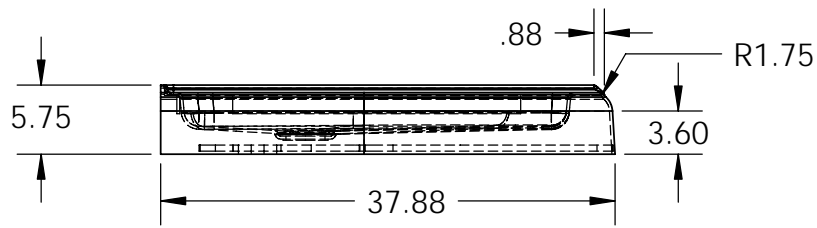
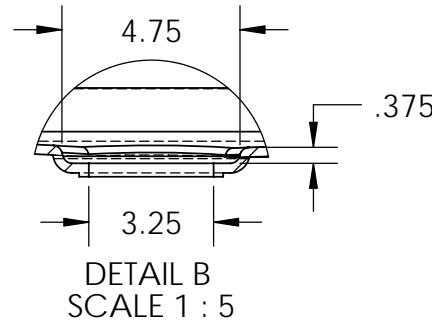
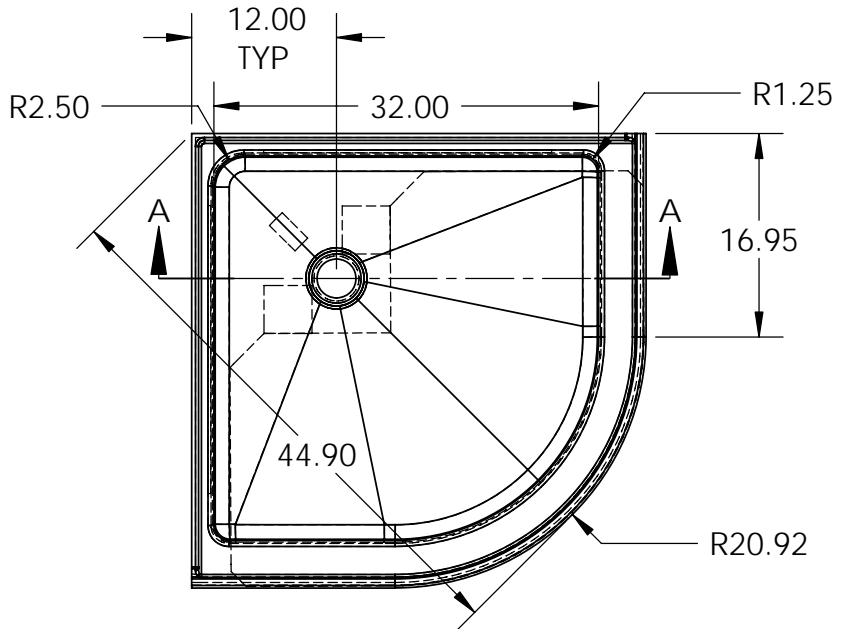


| ITEM NO. | PART NUMBER | QTY. |
|----------|-----------------------------------|------|
| 1 | 36RB36 - 36" ROUND BASE | 1 |
| 2 | 36" WOOD ROUND | 1 |
| 3 | 4" SUPPORT SQUARE | 2 |
| 4 | 0.375" x 1.5" x 3" LEVELING BLOCK | 1 |
| 5 | 24" SUPPORT STICK | 2 |



NOTES:

1. MINIMUM SLOPE > 1 DEGREE
2. DIMENSIONS IS FROM TOP OF THRESHOLD TO THE TOP OF FIXTURE DRAIN OPENING
3. ALL RADIUS 0.50" UNLESS OTHERWISE STATED
4. ALL DIMENSIONS ARE APPROXIMATE AND SUBJECT TO CHANGE WITHOUT PRIOR NOTICE



PROPRIETARY AND CONFIDENTIAL
 THE INFORMATION CONTAINED IN THIS DRAWING IS THE SOLE PROPERTY OF TOMLIN INDUSTRIES (2000) INC. ANY REPRODUCTION IN PART OR AS A WHOLE WITHOUT THE WRITTEN PERMISSION OF TOMLIN INDUSTRIES (2000) INC. IS PROHIBITED.

| | | | | |
|---|-----------|------|---------|---|
| UNLESS OTHERWISE SPECIFIED: DIMENSIONS ARE IN INCHES TOLERANCES: FRACTIONAL: ± 3% ANGULAR: ± 5% TWO PLACE DECIMAL: ± 3% THREE PLACE DECIMAL: ± 3% | DRAWN | NAME | DATE | TITLE: CASTILLO 36 ROUND BASE |
| MATERIAL ACRYLIC SHEET | CHECKED | D.S. | 8/23/07 | |
| FINISH | ENG APPR. | | | |
| DO NOT SCALE DRAWING | MFG APPR. | | | |
| | Q.A. | | | |

| | | | |
|--|------------------|---------------------------|-----|
| COMMENTS: AVAILABLE IN WHITE, BONE AND BISCUIT | SIZE A | DWG. NO. 36RB36 | REV |
|--|------------------|---------------------------|-----|

| | | |
|-------------|---------|--------------|
| SCALE: 1:24 | WEIGHT: | SHEET 1 OF 1 |
|-------------|---------|--------------|